



Introduction

Welcome to the ONYZE FAMILY!

Introducing ONYZE, where innovation harmonizes with audio excellence. As a premier headphone company, we pride ourselves on crafting unparalleled auditory experiences that transcend the ordinary. Our commitment lies in seamlessly blending cutting-edge technology with sophisticated design to elevate every beat, every note, and every moment. ONYZE offers a diverse range of headphones meticulously engineered to deliver pristine sound quality, exceptional comfort, and unrivaled style. Join us on a journey where music isn't just heard, but felt, with ONYZE, where every listening experience is a symphony of sonic perfection.

ONYZE-TWS-ON902-Xact-Shot. Immerse yourself in the ultimate gaming experience with our premium gaming earbuds. Designed for gamers on the go, these earbuds combine high-quality sound performance with lightweight comfort. Equipped with advanced audio drivers, they deliver crisp highs, deep bass, and precise 3D positional audio to give you a competitive edge.

Features include ENC (Environmental Noise Cancellation) technology for crystal-clear communication, and universal compatibility with consoles, PCs, and mobile devices. With durable construction and ergonomic ear tips in multiple sizes, these earbuds ensure a snug fit during long gaming sessions. Elevate your gaming setup with earbuds that offer both style and performance. Enjoy seamless connectivity with dual pairing earbuds, allowing you to connect to two devices simultaneously. Switch effortlessly between calls, music, and gaming without missing a beat!

1



Package Contents



Charging Case x 1PC



Extra Eartips



Type-C Charging Cable x 1PC



User Manual x 1PC

2



Product Overview

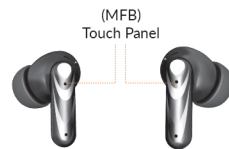


3



Touch Control Diagram

The touch area (MFB Touch Panel) is located in the upper part of earbuds handle.



HOWTOCONNECTWITHTWO DEVICES

- Connect earphones with Bluetooth device A (a phone/laptop/PC etc.)
- Turn off Bluetooth on device A to disconnect, so that earphones can be ready to be paired with device B.
- Connect earphones with Bluetooth device B (a phone/laptop/PC etc.)
- After connection with device B is completed, turn on Bluetooth on device A to reconnect with earphones.

After first-time dual-device connection is established, earphones can automatically connect with previously connected 2 devices.

4



Power ON/ OFF

Power on

Auto: Open the charging case and take out the earbuds to power on
Manually: Press and hold the MFB for 3s.



Open cover and take out the earbuds to power on

Touch to turn on

Power off

Auto: Place both Earbud in your charging case, Close the lid.
Manually: Press and hold the MFB for 5s.



Put earbuds in to power off

Touch to turn off

5



Pairing

1. Open the charging case, and take out the earbud, earbud, will pair automatically. One of the earbuds flashes blue the another earbud light goes out.
2. Activate Bluetooth on the device, turn on Bluetooth, search for pairing name "ON902" and click on it.



Tips: Next use, Open the charging case, earbuds auto connect phone.

Single Mode

When on dual mode, put one earbud into the charging case. Only take one earbud out of the charging case and connect it.



6



Safety and Maintenance

By following these tips, you can help ensure the safety of your ears and the longevity of your earbuds.

Use earbuds at a safe volume: Prolonged exposure to loud music can lead to hearing loss. Make sure you use earbuds at a safe volume to prevent any damage to your hearing. As a general rule, if someone standing a few feet away from you can hear your music, it's too loud.

Take breaks: Give your ears a break by taking them out every hour or so. This will help prevent any discomfort or pain that can come from prolonged use.

Clean your earbuds: Regularly clean your earbuds with a dry, soft cloth.

Avoid using water or any harsh chemicals as this can damage the earbuds.

Store your earbuds properly: Store Your earbuds in a clean, dry place to prevent any damage or wear and tear.

Avoid sharing earbuds: Sharing earbuds can increase the risk of ear infections and other health issues. Use your own earbuds and avoid sharing them with others.

Replace worn-out ear tips: Over time, the ear tips on your earbuds can wear out, which can affect the sound quality and comfort. Replace them as needed to ensure the best possible listening experience.

7

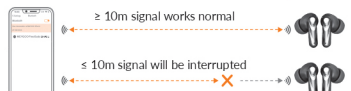


Bluetooth Lost

1. Turn off mobile phone's Bluetooth earbuds will enter the pairing mode and can pair with other devices.
2. If the connection range is exceeded, the earbuds will enter the back connection mode. No connection within 5 minutes, the earbuds will turn off.



Notes For Signal Transmission Distance (as illustrate)



ENC

The ENC (Environmental Noise Cancellation) tech algorithm cancels out the background noise for crystal clear voice calls. ENC doesn't need to be activated as the 4 mics are equipped with the same and activated by default.

8



Reset

If your earbuds accidentally only get one earbud to work, or fail to pair, please reset the earphone.

1. Delete all "ON902" Bluetooth records on the phone, and turn off Bluetooth
2. Put earbuds into charging case, and then take out to pairing modes, tap L & R MFB 5 times simultaneously, hear "DU" Prompt voice to clear all pairing.
3. Put earbuds into charging case.



Remove ON902 records



Tap L&R 5 times simultaneously

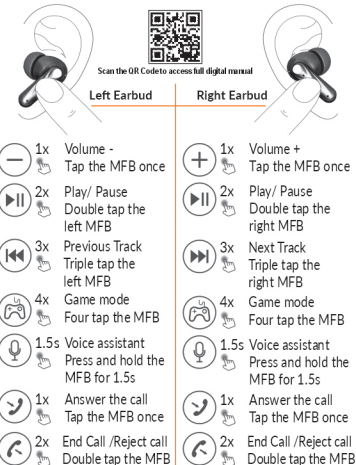


Put earbuds into charging case

9



Touch Operation

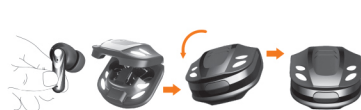


10



Charge your earbuds

Place your earbuds into the charging case and close the lid, earbuds automatically complete charge.



11



Product Parameter

Earbud (each)

Model Number:
Model Name:
Bluetooth Version:
Speaker:
Bluetooth Range:

Technology:

Frequency Range:
Weight:
Size:
Charging Time:
Battery Capacity:
Play Music Time:

Input:

Charging Case
Weight:
Size:
Charging Time:
Battery Capacity:
Input:

ON902
Xact-Shot
V5.3
Ø10mm
10m/ 33ft (with out obstacles)
a2dp\avctp\avdtp\avrcp\hfp\ssp\sm\att\gap\gatt\rfco mm\sdp\l2cap
20Hz~20KHz
4g
33*21*19mm
0.5H
40mAh
7H-10H at 60% volume
DC 5V=0.08A

34g
54*46*27mm
1.5H
400mAh
DC 5V=0.1A

12



Earbuds Warning

1. Please do not place the product in an environment where the temperature is too low (above 45°C or below 0°C).
2. Do not dismantle or repair the earbuds under any circumstances, if necessary, please send the product to the seller for repair.
3. Do not throw and drop the earbuds to avoid damage.
4. The earbuds and the BT devices will be disconnected if the distance between them is more than 10 meters.
5. Keep the device and accessories away from children and pets.
6. Do not put the earbuds into the washing machine.



Battery Warning

1. The battery in the product may cause fire disaster or risk of chemical burning if mishandled.
2. Please charge with a rated voltage charger.
3. The discard of battery should obey local law, if possible please recycle it. Do not dispose it as household garbage, because it may cause an explosion.
4. Users are not allowed to take out or replace battery in the product unless there is a stipulation on user manual. It is very hazardous to do this, may cause a damage to product.

Follow US ON:



WWW.ONYZEONSTYLE.COM

13



onyze

ON902
Xact-Shot
USER MANUAL

True Wireless Stereo